

# FOR SALE



## West Dewdney Industrial Park

- Site Size: Approximately 190 Acres with sub-divided lots of between 2.5 and 4.0 acres.

### Contact Information

Micky Schmitz  
306 525 3344  
mickys@naisask.com

Paul Mehlsen  
306 525 3344  
paulm@naisask.com

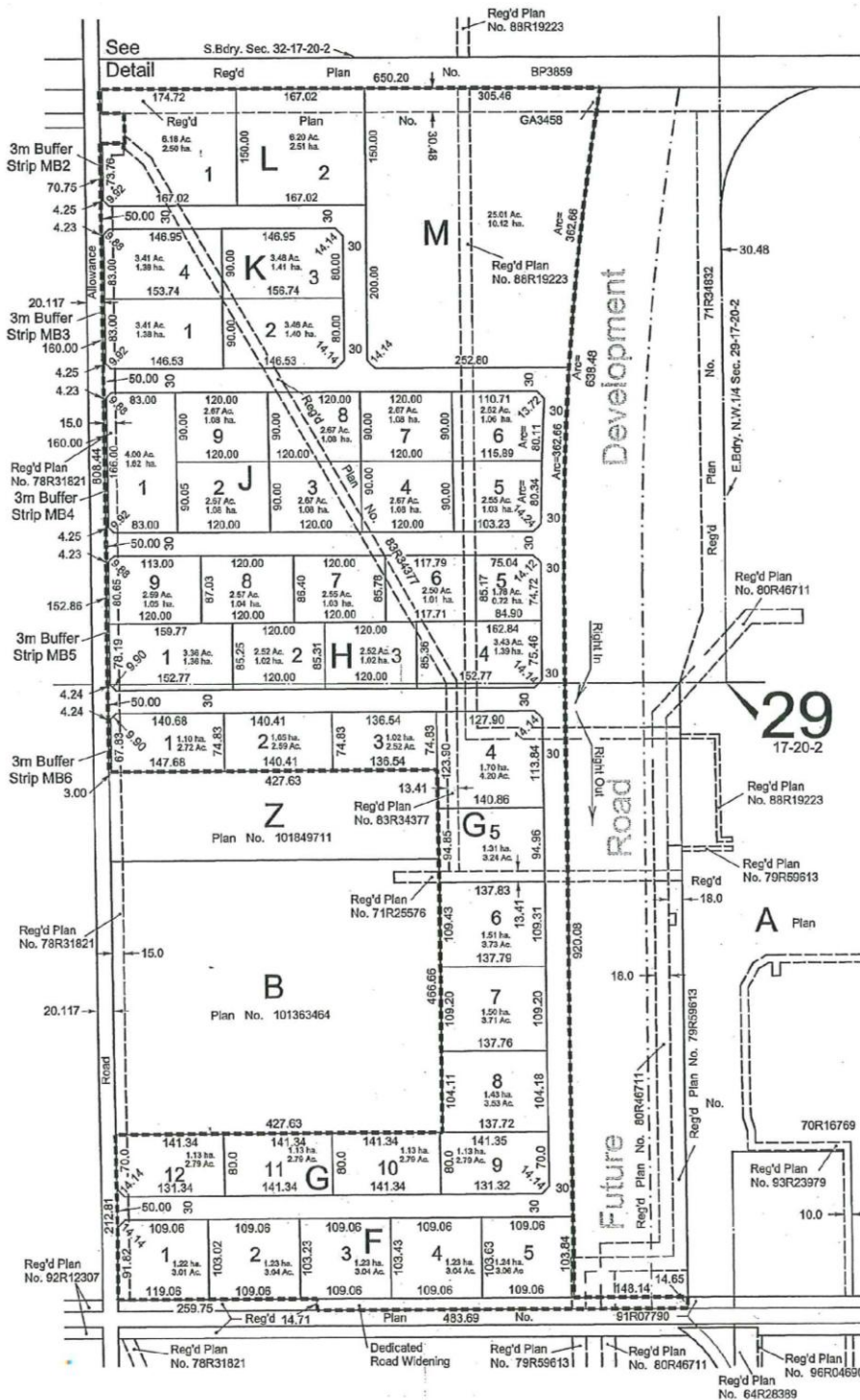
# NAI Commercial

Commercial Real Estate Services, Worldwide.

The information contained herein has been given to us by the owner of the property or other sources we deem reliable. We have no reason to doubt its accuracy, but we do not guarantee it. All information should be verified prior to purchase or lease.

NAI Commercial Real Estate  
(Sask) Ltd.  
200-2505 11<sup>th</sup> Avenue  
Regina, Saskatchewan, CA  
S4P 0K6  
PH: 306 525 3344  
Fax: 306 565 8131  
www.naisask.com

# FOR SALE



**Property Description:**  
 Prime industrial lots located approximately 2 km west of Regina on Dewdney Avenue. The land is located in the RM of Sherwood, and is close to the Global Transportation Hub.

## Proposed Property Amenities:

- Distributed Water
- Natural Gas Service
- Electrical Service
- 30 Meter Wide Roadways

**Zoning:**  
 Industrial

**Price:**  
 To be announced- call Listing Agent for more information

Oct 10

**NAI Commercial**  
 Commercial Real Estate Services, Worldwide.

## Contact information

Micky Schmitz  
 306 525 3344  
 mickys@naisask.com

Paul Mehlsen  
 306 525 3344  
 paulm@naisask.com

The information contained herein has been given to us by the owner of the property or other sources we deem reliable. We have no reason to doubt its accuracy, but we do not guarantee it. All information should be verified prior to purchase or lease.