

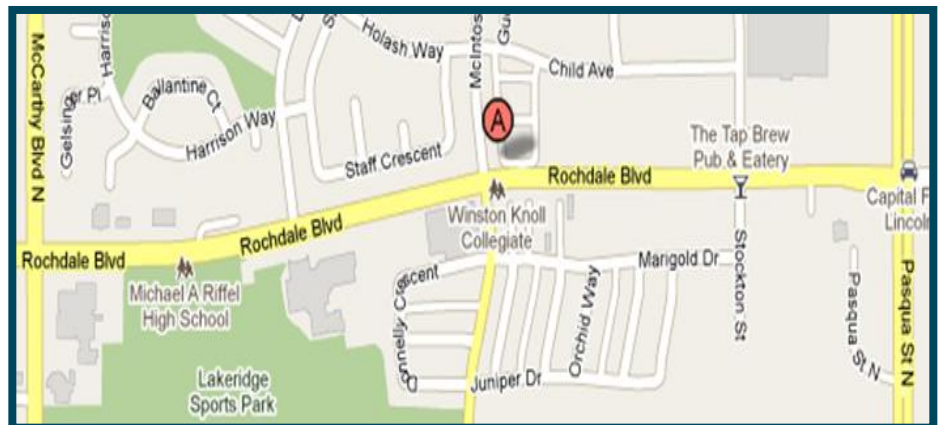
FOR LEASE



5650 Rochdale Blvd.

Property Highlights

- Available Space:
4 bays of 2,064 sq.ft. each (New build)
- Base Rental Rate:
\$28.00 psf



NAI Commercial

Commercial Real Estate Services, Worldwide.

NAI Commercial Real Estate
(Sask) Ltd.

200-2505 11th Avenue
Regina, Saskatchewan, CA
S4P 0K6

PH: 306 525 3344

Fax: 306 565 8131

www.naisask.com

FOR LEASE

Property Description:

Landlord is re-developing the site to a multi-tenant retail strip.. No restrictions of use to this site.

Location:

Rochdale Blvd. in the north end of Regina, close to schools and the Rochdale Crossings.

Municipal Address:

5650 Rochdale Blvd. Regina, SK

Zoning:

MS – Main Street

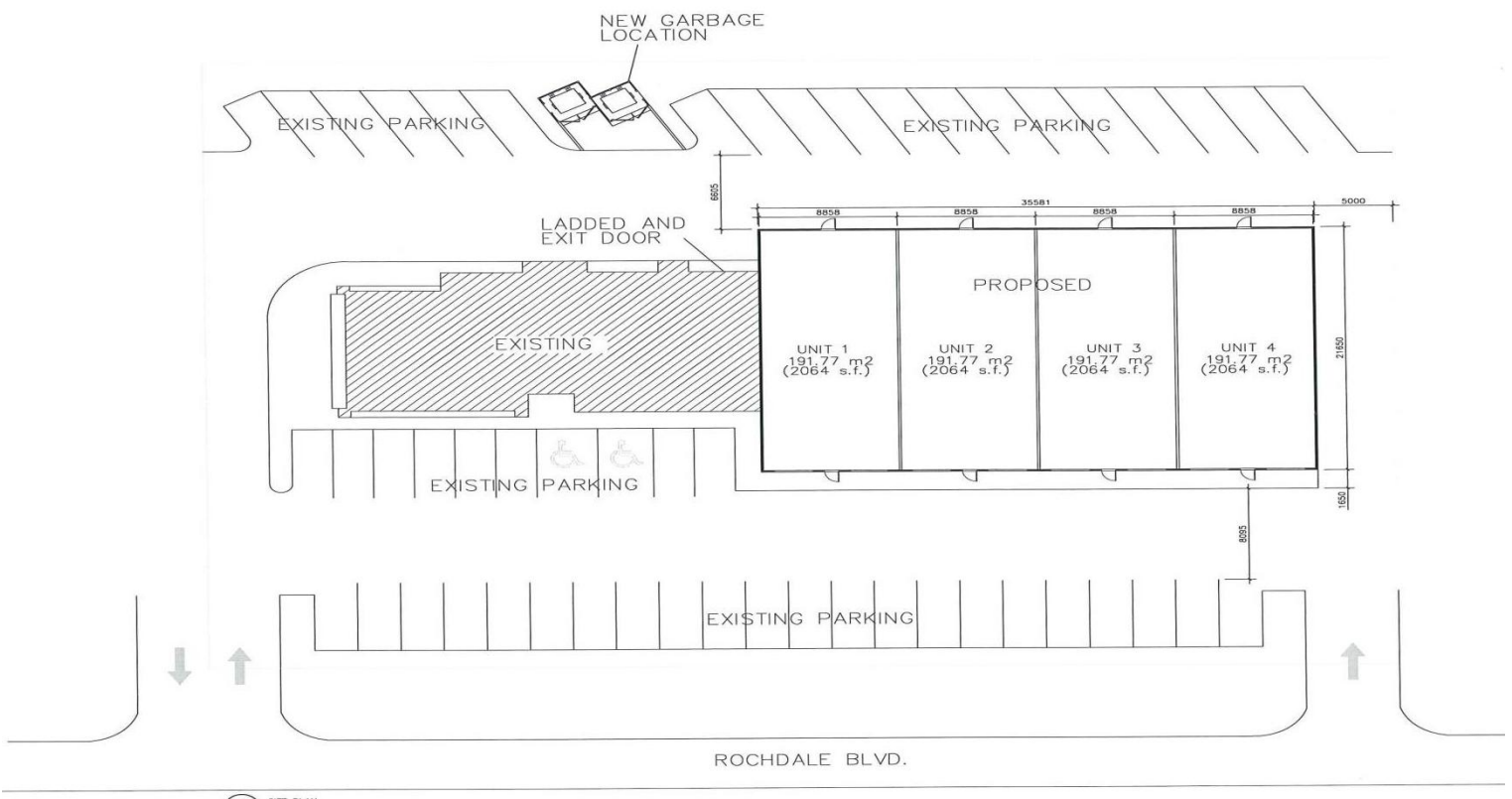
Base Rental Rate:

\$28.00 psf

Operating Costs & Property Taxes (2012):

\$8.00 psf (estimated)

Jan 12



NAI Commercial

Commercial Real Estate Services, Worldwide.

The information contained herein has been given to us by the owner of the property or other sources we deem reliable. We have no reason to doubt its accuracy, but we do not guarantee it. All information should be verified prior to purchase or lease.

For further information

Micky Schmitz

306 525 3344

mickys@naisask.com