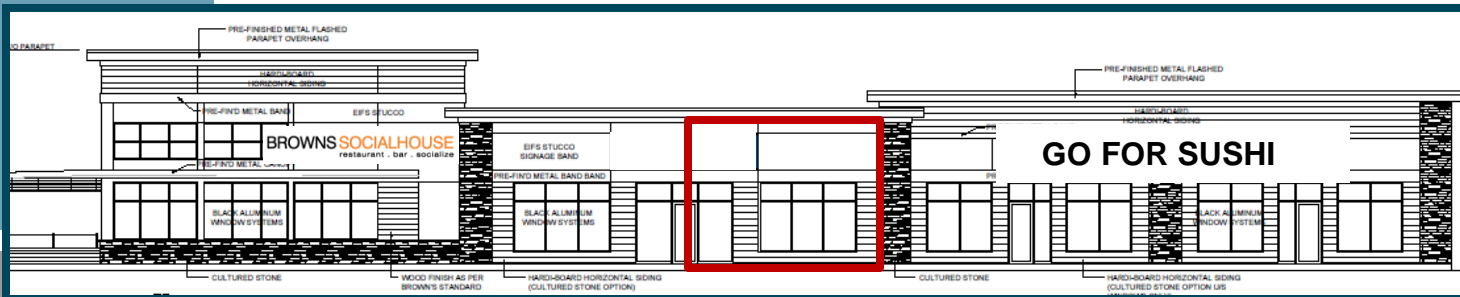


# FOR LEASE



3610 East  
Eastgate Drive

## Property Highlights

Available Space:  
approx. 1,605 sq.ft.

Base Rental Rate:  
\$31.00 psf net

Join Browns Social House, Go  
For Sushi and Mr. Sub  
in this new  
Multi-Tenant Strip

Projected Occupancy  
Summer 2012

**NAI** Commercial

Commercial Real Estate Services, Worldwide.

NAI Commercial Real Estate  
(Sask) Ltd.  
200-2505 11<sup>th</sup> Avenue  
Regina, Saskatchewan, CA  
S4P 0K6  
PH: 306 525 3344  
Fax: 306 565 8131  
www.naisask.com

# FOR LEASE

## Property Description:

This retail multi-tenant strip has 9 hotels within 5 minutes of the site, 1 block north of Prince of Wales and Hwy #1. Large format retail in the area such as, Wal-Mart, Real Canadian Superstore, Rona, Best Buy, Winners, etc. Developers already building multi-family condo and apartment in the area, with more in planning already! Site will service, Creekside, Parkridge, Glencairn and Windsor Park subdivisions.

## Location:

Located on the NE corner of Prince of Wales and E. Eastgate Drive.

## Municipal Address:

3610 East Eastgate Drive, Regina, Saskatchewan

## Zoning:

MAC

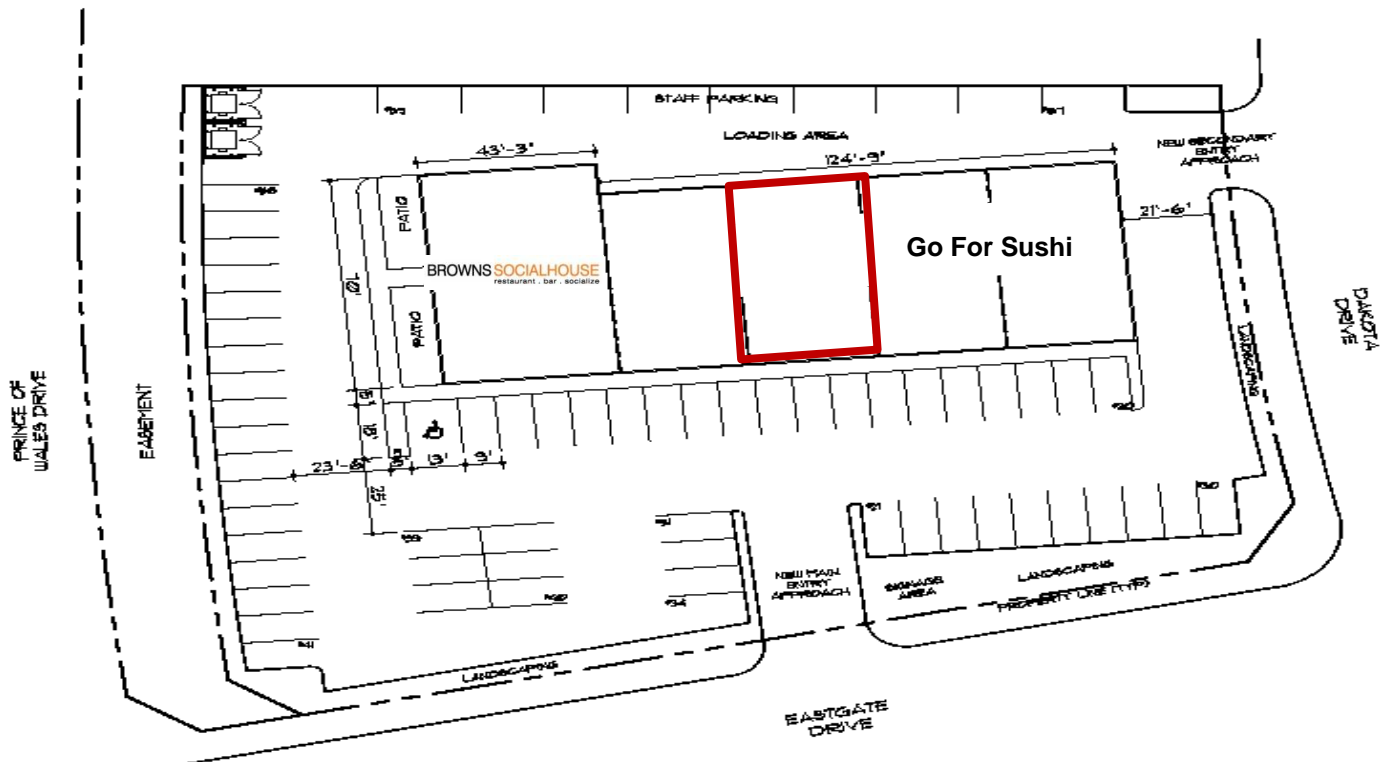
## Base Rental Rate:

\$31.00 psf net

## Operating Costs & Property Taxes (2011):

\$8.50 psf

Oct 11



**NAI Commercial**

Commercial Real Estate Services, Worldwide.

The information contained herein has been given to us by the owner of the property or other sources we deem reliable. We have no reason to doubt its accuracy, but we do not guarantee it. All information should be verified prior to purchase or lease.

For further information

Micky Schmitz

306 525 3344

mickys@naisask.com