

FOR LEASE



1822 Turvey Road

Property Highlights

- Available Space:
2,100 sq.ft.
- Rental Rate:
\$13.00 psf

For further information

Micky Schmitz
306 525 3344
mickys@naisask.com

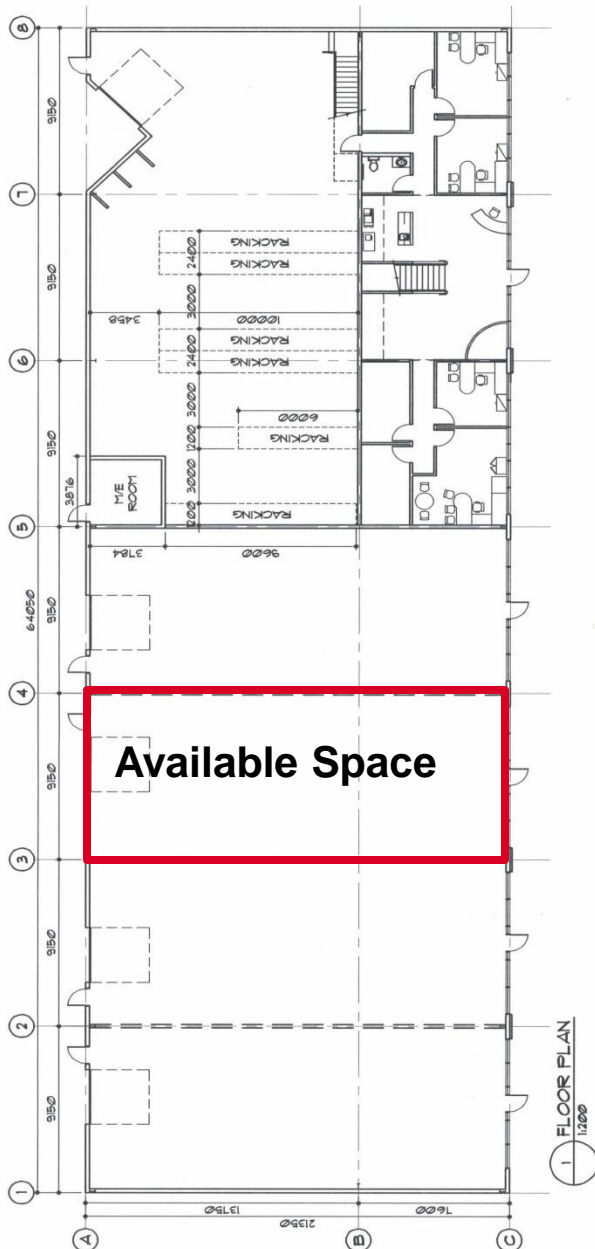
NAI Commercial

Commercial Real Estate Services, Worldwide.

The information contained herein has been given to us by the owner of the property or other sources we deem reliable. We have no reason to doubt its accuracy, but we do not guarantee it. All information should be verified prior to purchase or lease.

NAI Commercial Real Estate
(Sask) Ltd.
200-2505 11th Avenue
Regina, Saskatchewan, CA
S4P 0K6
PH: 306 525 3344
Fax: 306 565 8131
www.naisask.com

FOR LEASE



Location:

Located on Turvey Road between Henderson Drive and North Fleet Street.

Property Description:

Basic Specifications include:

- Very energy efficient
- 16' Overhead grade level door
- 24' clearance underside of truss
- Drywall, demising walls
- Can be constructed with 2nd floor mezzanine
- Warehouse lighting
- Electrical subpanel
- Finished concrete floor
- Overhead heating units
- Front glass and aluminum store front
- Rough-in washroom
- Front office area furnace
- Tenant improvement allowance may be considered

Municipal Address:

1822 Turvey Road, Regina, Saskatchewan

Zoning:

Medium Industrial

Lease Rate:

\$13.00 psf

Operating Costs & Property Taxes:

\$4.00 psf (estimated)

Jan 11

For further information

Micky Schmitz

306 525 3344

mickys@naisask.com

NAI Commercial

Commercial Real Estate Services, Worldwide.

The information contained herein has been given to us by the owner of the property or other sources we deem reliable. We have no reason to doubt its accuracy, but we do not guarantee it. All information should be verified prior to purchase or lease.

NAI Commercial Real Estate
(Sask) Ltd.
200-2505 11th Avenue
Regina, Saskatchewan, CA
S4P 0K6
PH: 306 525 3344
Fax: 306 565 8131
www.naisask.com